

# NEABLE

BUILDING CAPACITIES AND CAPABILITIES IN NORTH EAST INDIA



**NEABLE** IS A COLLABORATION BETWEEN **LA**, SIKKIM  
AND **MEGAMATRIX**, NEW DELHI TO POSITION NORTH EAST INDIA  
AS A STRONG DESIGN AND PRODUCTION HUB  
FOR SUSTAINABLE PRODUCTS IN INDIA.

LA IS A MOUNTAIN PRODUCT BRAND BASED IN SIKKIM FOCUSED ON  
DEVELOPING PRODUCTS FOR THE MOUNTAINOUS REGIONS OF THE WORLD.

MEGA MATRIX (P) LTD RUNS VOCATIONAL TRAINING CENTERS AS  
THE IMPLEMENTING AGENCY FOR THE MINISTRY OF TEXTILES  
AND OTHER CENTRAL AND STATE GOVERNMENTS.



NEABLE HAS PRODUCTION UNITS BASED IN  
BARFOK, WEST SIKKIM AND ASSAM



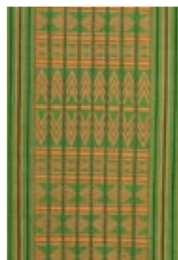
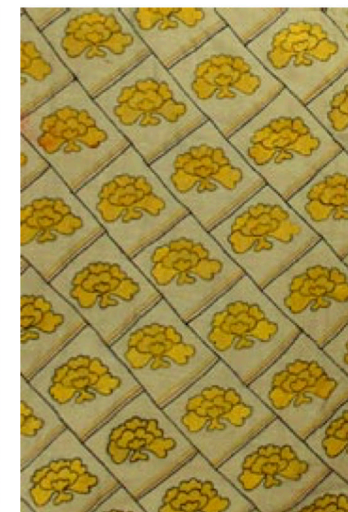
SIKKIM AND ASSAM APPAREL UNIT  
WILL HAVE A COLLECTIVE PRODUCTION  
STRENGTH OF 200 PEOPLE EACH





## NEPOTENTIAL

EXISTING HANDLOOM  
PRODUCTS WHICH  
CAN BE INTEGRATED  
WITH THE APPAREL  
AND GARMENT SECTOR







NEPOTENTIAL

REVERSIBLE JACKETS  
MADE USING SILK

WE CAN DEVELOP  
A RANGE USING  
MUGA AND ERI SILK  
FABRIC FROM ASSAM







NEPOTENTIAL

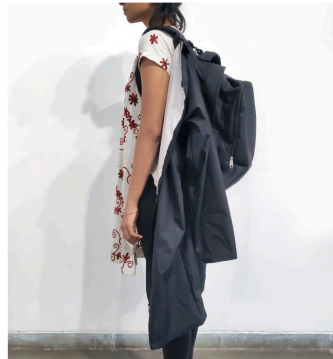
APPAREL PRODUCTS USING KHADI SILK





HOME FURNISHING WITH PRINTS REPRESENTING  
THE FLORA AND FAUNA OF NORTH EAST INDIA

गाडी  
NUMBER 11



NEPOTENTIAL

Gaadi Number 11 is not only a product but a design solution catering to mobility vis-a-vis walking in the mountainous regions of India and the world.



THANK YOU